



MOTOROLA SOLUTIONS

IMPRES Battery
Fleet Management
Features Configuration

Table of Contents

1. Introduction.....	1
2. Features Configuration.....	2
2.1 Activation.....	2
2.1.1 Online Activation.....	2
2.1.2 Offline Activation.....	3
2.2 Server/Client Environment Setup.....	5
2.2.1 Server PC.....	5
2.2.2 Client PC.....	8
2.3 Enable Mototrbo Radio Network feature.....	11
2.4 Enable ASTRO UNS feature.....	13
2.5 Device/Charger Firmware Update.....	15
2.6 Radio Family Update.....	18

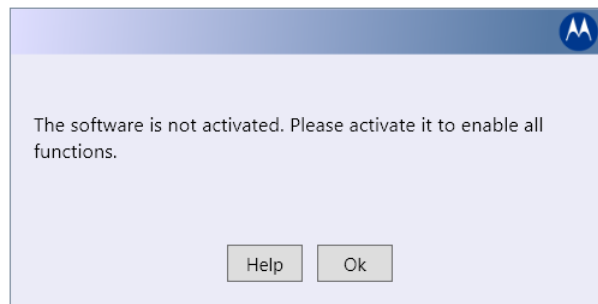
1. Introduction

This document is to provide configurations needed to enable certain features on the IMPRES Battery Fleet Management application. Some of the features are optional and you may skip any part of the configuration that is not needed.

2. Features Configuration

2.1 Activation

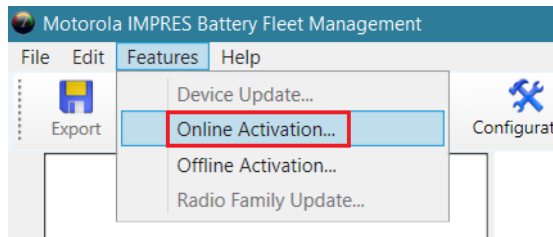
IMPRES Battery Fleet Management application is required to be activated in order to enable full functionalities. If the application is not activated, the below dialog box will be shown during launching the application.



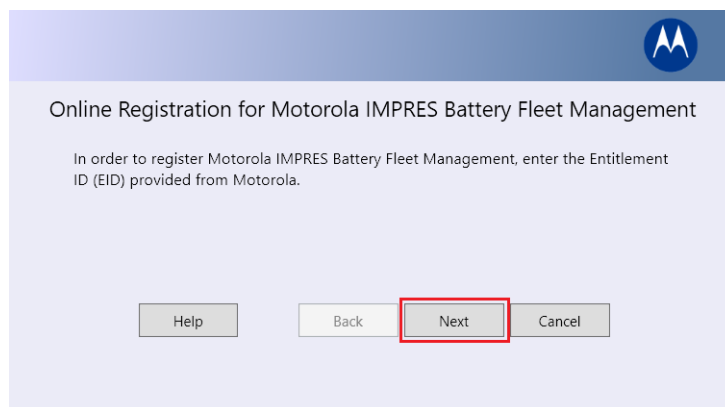
To activate the application, follow the below steps:

2.1.1 Online Activation

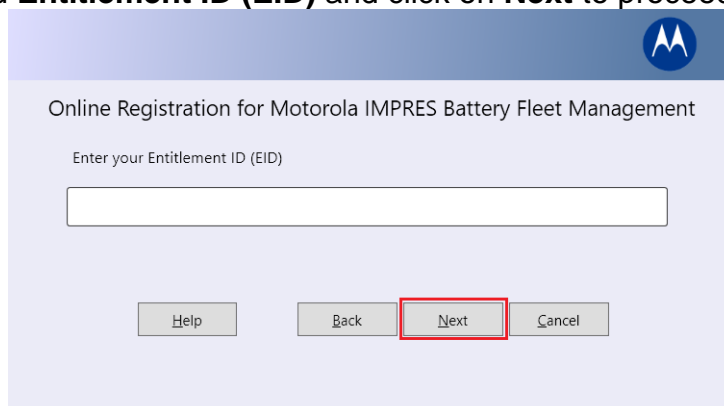
1. For Online Activation, go to **Features** and then select **Online Activation...**



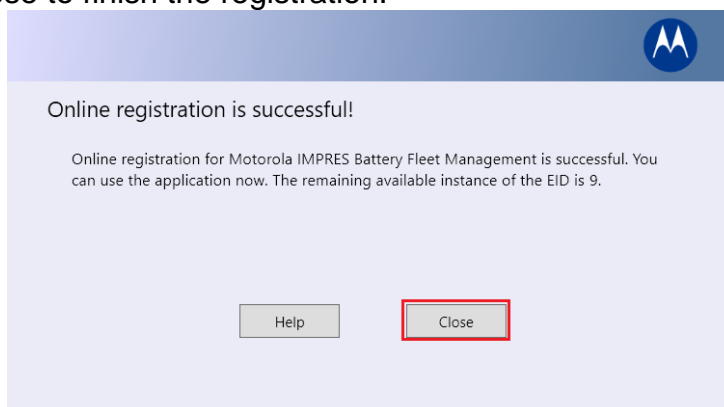
2. Click on **Next**.



3. Enter the provided **Entitlement ID (EID)** and click on **Next** to proceed.

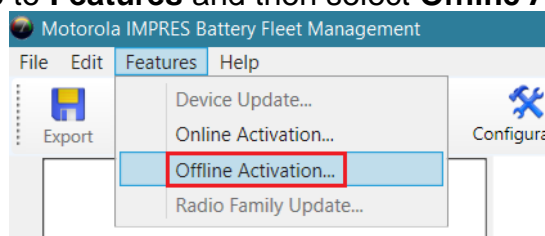


4. Once the registration is successful, you can see the remaining available instance of the EID left. Click on **Close** to finish the registration.

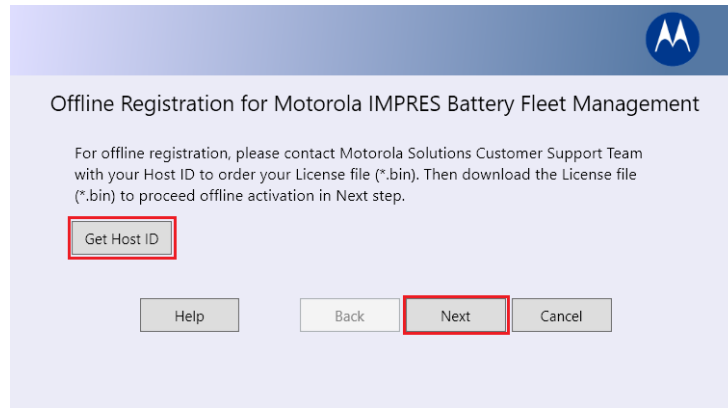


2.1.2 Offline Activation

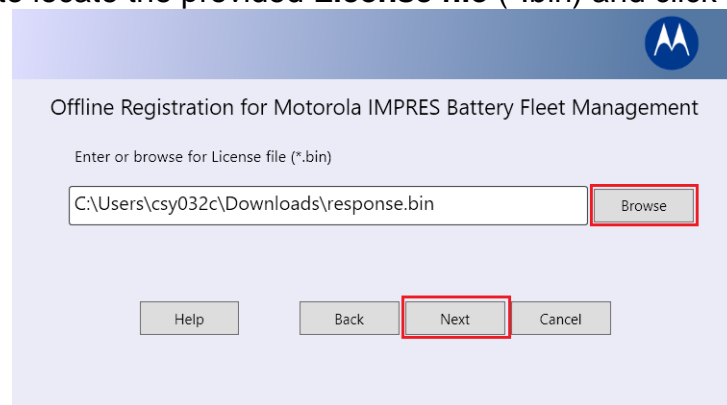
1. For Offline Activation, go to **Features** and then select **Offline Activation...**



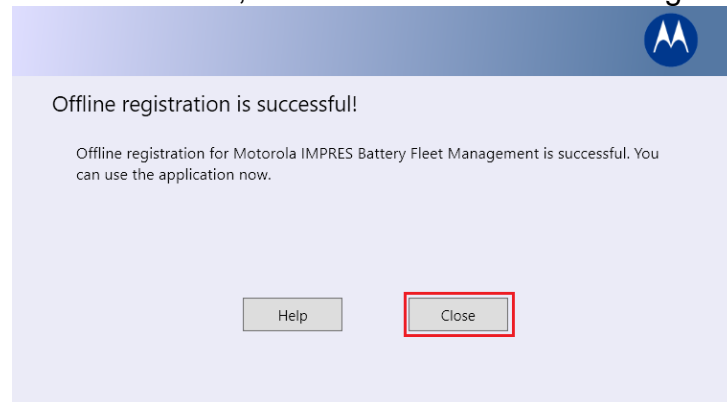
2. Click on **Get Host ID** to save the Host ID file and then contact **Motorola Solutions Customer Support Team** with the Host ID to order License file. Once you have the License file, click on **Next**.



3. Click on **Browse** to locate the provided **License file (*.bin)** and click on **Next** to proceed.



4. Once the registration is successful, click on **Close** to finish the registration.

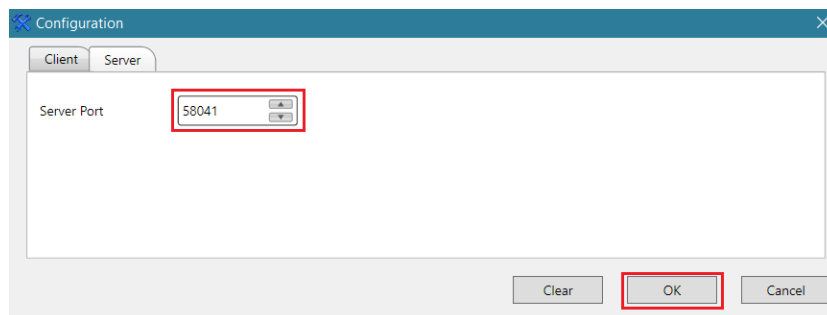


2.2 Server/Client Environment Setup

To setup IMPRES Battery Fleet Management in Server/Client environment mode, start the Application as administrator and then click on the Configuration icon.

2.2.1 Server PC

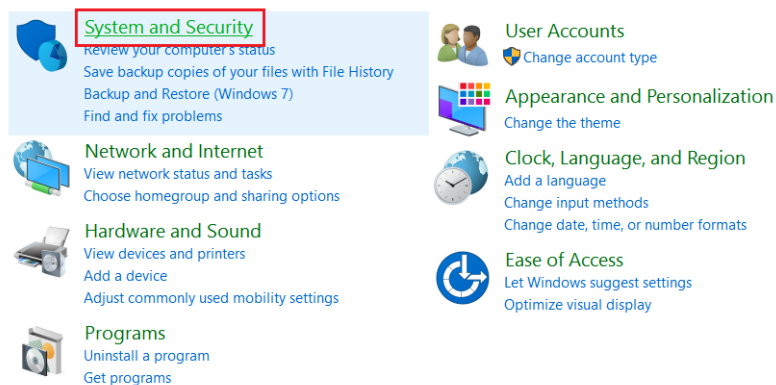
In the Server tab, insert the port number on which the IMPRES Battery Fleet Management server will communicate to clients. This port number must be the same on all computers running IMPRES Battery Fleet Management.



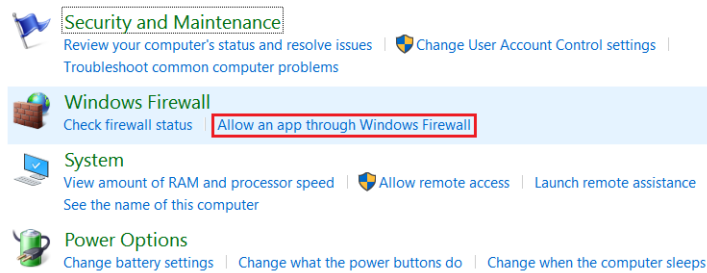
In some instances, the computer's Windows Firewall will block any communication services from other computer. The Windows services used by IMPRES Battery Fleet Management for Server/Client setup will be blocked.

Below is the procedure to allow IMPRES Battery Fleet Management application to communicate through Windows Firewall:

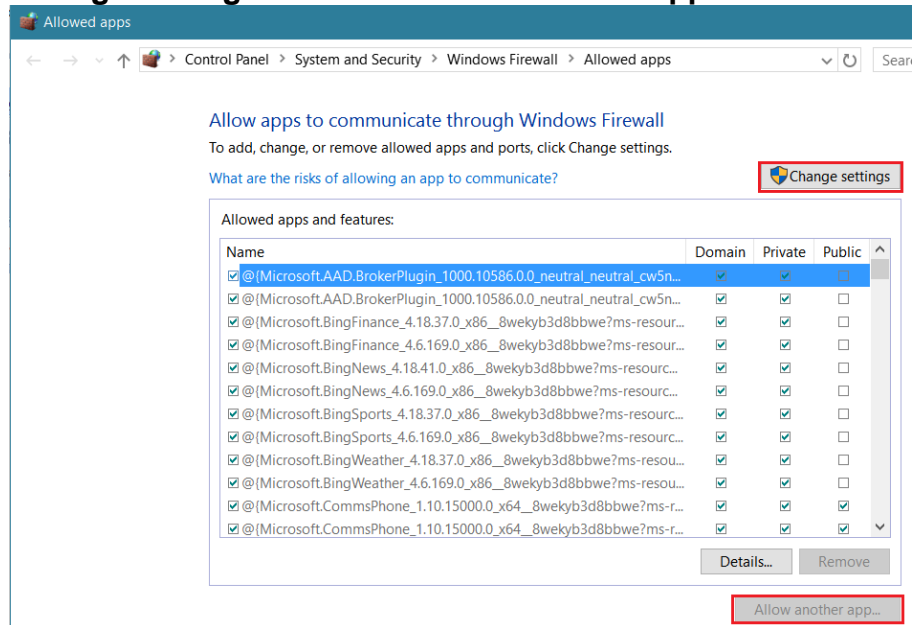
1. Go to **Control Panel**, select **System and Security**.



2. Select **Allow an app through Windows Firewall**.

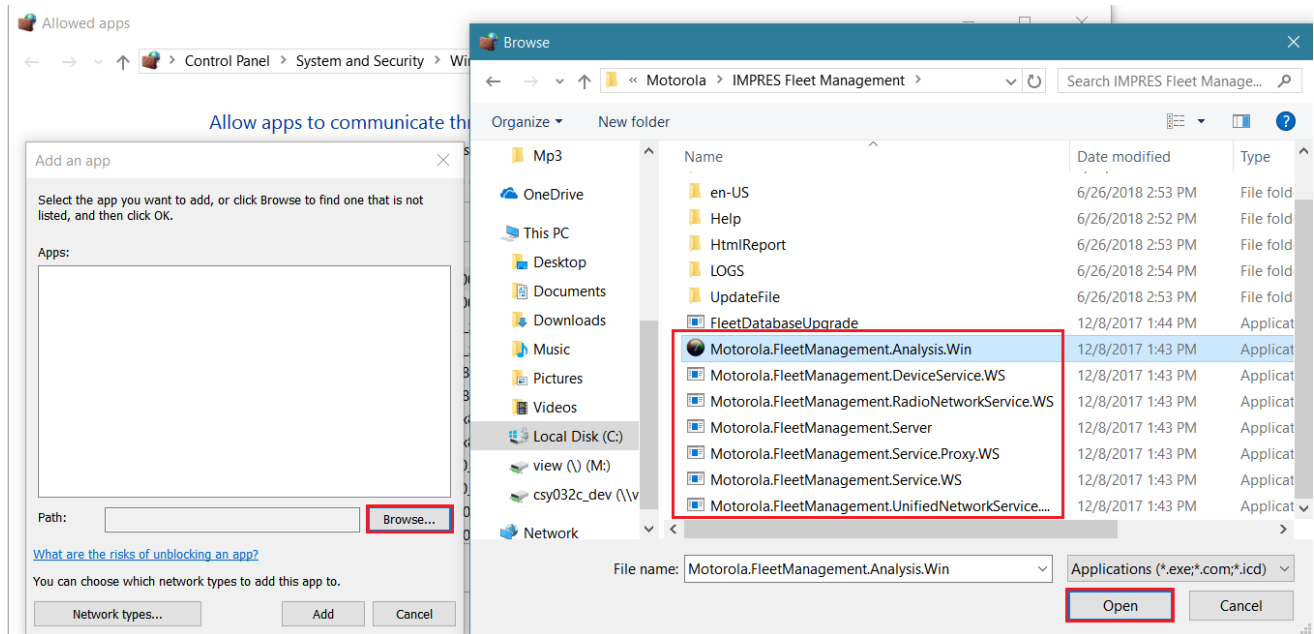


3. Click on the **Change settings** button and **Allow another app...** button.

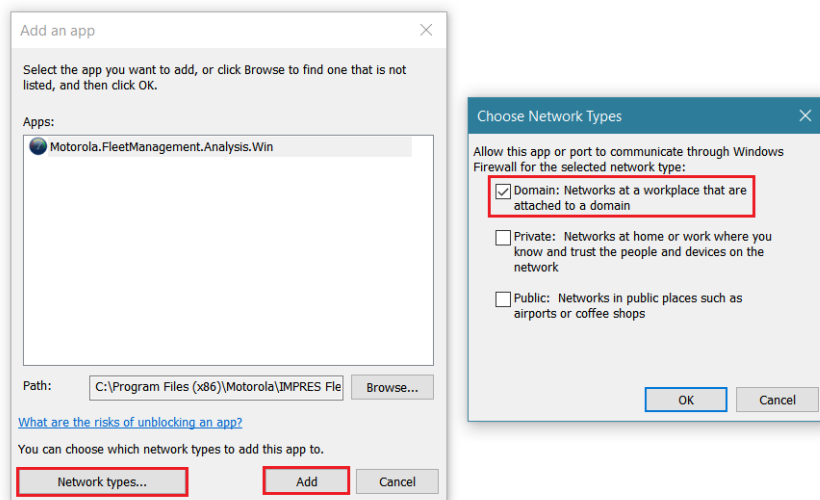


4. From the **Add an app** window, click on the **Browse** button to locate the IMPRES Battery Fleet Management service application (.exe) file and then click on the **Open** button.

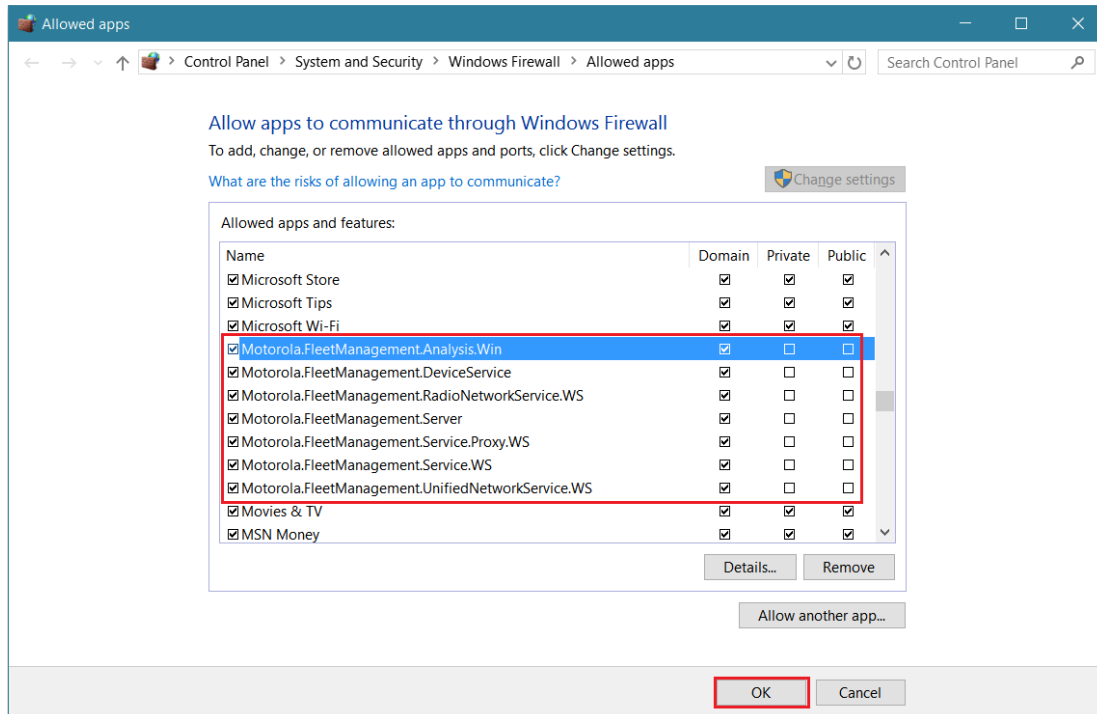
Note: The default full path for the application is located at
C:\Program Files (x86)\Motorola\IMPRES Fleet Management



5. Leave the **Network types** as default to only allow firewall for **Domain**. Then click on the **Add** button to add the selected application file into the list.



6. Repeat the above steps to add in all the other service application files. Then click on **OK** button to close the window.



2.2.2 Client PC

In the Client tab, insert the **Server Address** of the computer that is currently configured as the IMPRES Battery Fleet Management server. If there is only one computer running IMPRES Battery Fleet Management in your organization, the value of the Server Address should be 'localhost'. Then insert the **Server Port** number on which this client computer will communicate with the IMPRES Battery Fleet Management server. The value in this textbox should match the value in the Server Port textbox on the Server Tab on all computers running IMPRES Battery Fleet Management.

Configuration

Client Server

Server Address 10.228.35.23

Server Port 58041

Radio Network

Enable ☐ Port 4012 (*Please calibrate battery before retrieve any battery information through OTA)

UNS Client

Enable ☐ Username

Password

IDM Address e.g. idm.motorolasolutions.com

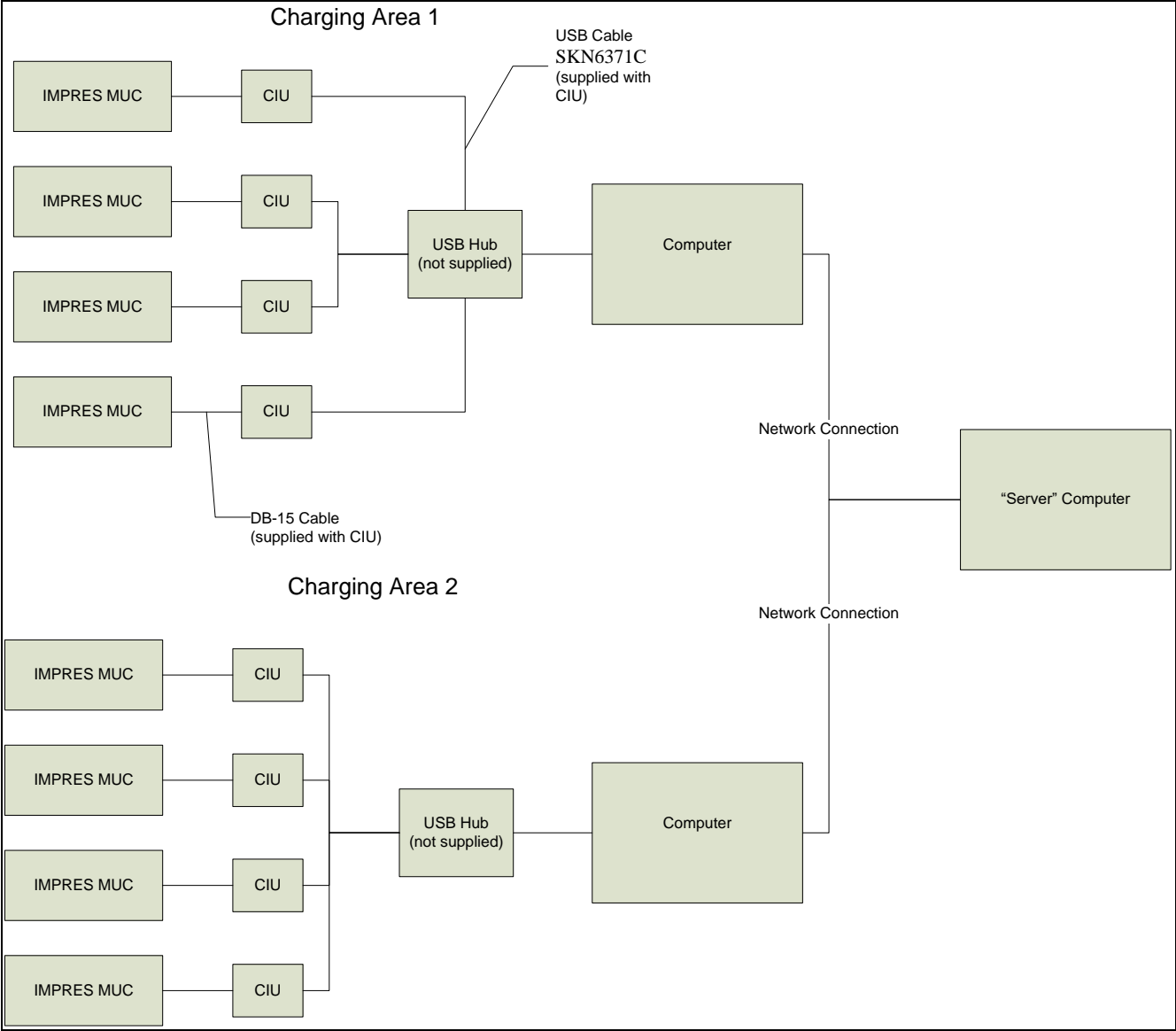
UNS Address e.g. uns.motorolasolutions.com

Domain e.g. abc

Presentity e.g. pressuid.00001.001.000001@abc (*Device ID must be in hexadecimal with leading zeros e.g. pressuid.005dc.0d7.00251c@abc)

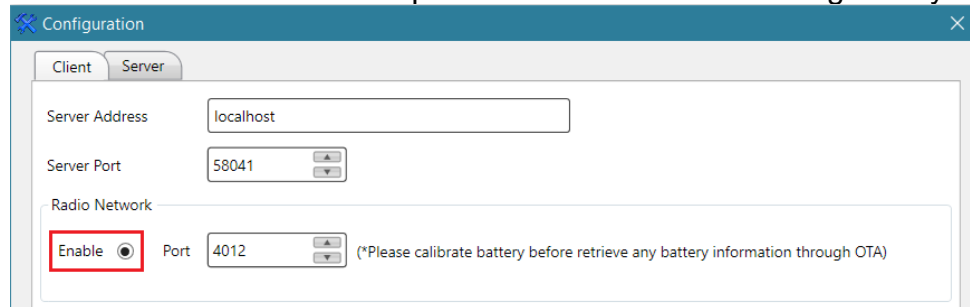
Clear OK Cancel

The following diagram illustrates one possible IMPRES Battery Fleet Management installation that has multiple IMPRES Multi Unit Chargers attached IMPRES Charger Interface Units that are attached to computers in different locations. The computers are networked to communicate with a single logical IMPRES Battery Fleet Management “server”.



2.3 Enable Mototrbo Radio Network feature

1. To enable **Mototrbo Radio Network feature**, start the Application as administrator and then click on the Configuration icon. The Radio Network is disabled by default. You need to enable the Radio Network when the computer is used as a radio data gateway.



Note1: The Application requires the Motorola Network Interface Service (MNIS) or a mobile radio in order to route the data to the appropriate channel and site. A static IP route may need to be manually entered in the computer that routes all radio data through the mobile radio's network interface if the Multi-Channel Device Driver (MCDD) is not utilized.

For example, by the default radio network ID configuration such as **Subscriber Network ID=12; Subscriber Network Mask=255.0.0.0**. The route table shall be like below:

```
=====
Persistent Routes:
```

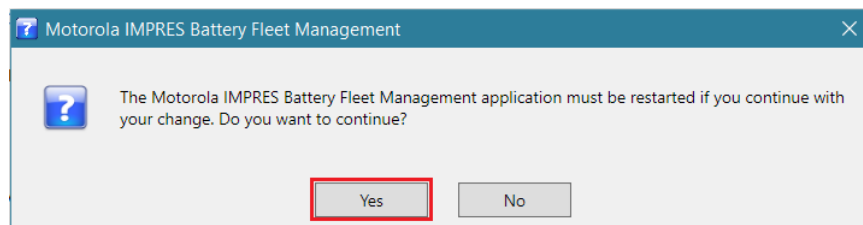
Network Address	Netmask	Gateway Address	Metric
169.254.0.0	255.255.0.0	192.168.1.6	1
13.0.0.1	255.0.0.0	192.168.10.12	1
12.0.0.0	255.0.0.0	192.168.10.1	1

```
=====
```

For example, the following is to add a route entry:
route add 12.0.0.0 mask 255.0.0.0 192.168.10.1 -p

Note2: To validate the setup of radio gateway, user shall be able to ping individual radio IP. For example, the following command is to check a radio with radio =1:
ping 12.00.00.01

2. After clicking on the OK button, select Yes when prompting the below dialog box. IMPRES Battery Fleet Management application will be restarted to begin Mototrbo Radio Network service.



3. Once the IMPRES Battery Fleet Management has received any incoming battery data, go to **System Device Monitor** tab and click on the **Radios and Batteries** for the battery report.

Motorola IMPRES Battery Fleet Management

File Edit Features Help

Export Refresh Preview Print Configuration Preferences Group About Help Exit

Radios and Batteries

CSY032C-04

Radios and Batteries (Total : 1)

Search Options

Radio ID: Battery Serial Number: BatteryType: All

Computer: All Request Status: All Proxy Status: All

Page 1 Of 1 Rows Per Page 50

Manual Request	Radio ID	Radio Alias	Proxy Status	Battery Serial Number	Battery Alias	Health (%)	Remaining Capacity (%)	Battery Type	Request Status	Date of Last Registration	Date Of Last Read
	12854		i	50000021D0EF	Mike	92	64	IMPRES	Success	10/8/2017 12:00 AM	10/8/2017 12:00 AM

Hide Navigation Panel

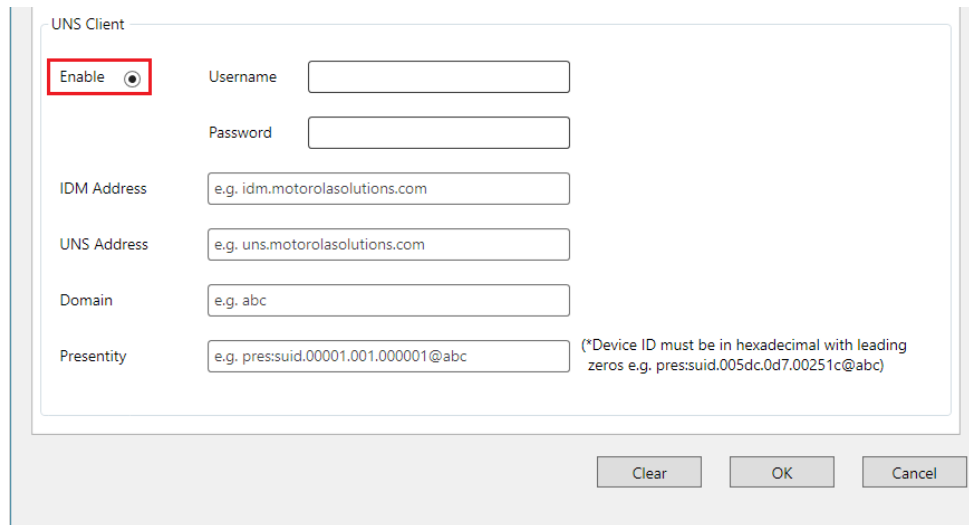
Reports

System Device Monitor

4. To perform a manual request, click on the Green button to for immediate battery data request.

2.4 Enable ASTRO UNS feature

1. To enable **ASTRO UNS (Unified Network Service) Client feature**, start the Application as administrator and then select Configuration icon. The UNS Client is disabled by default. You need to enable the UNS Client with UNS configuration to connect to the UNS system. Fill in all the necessary information and then click on **OK** button.

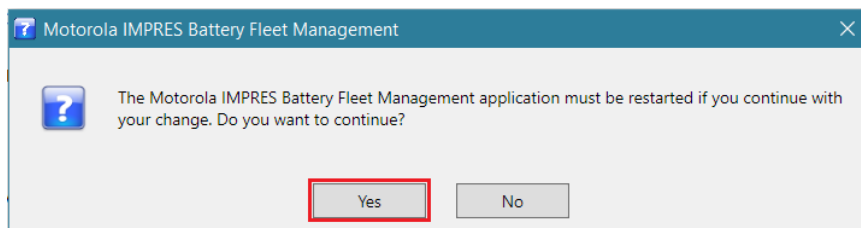


The screenshot shows the 'UNS Client' configuration window. It has a title bar 'UNS Client'. Inside, there is a section with a red box around the 'Enable' radio button, which is selected. To the right of this are input fields for 'Username' and 'Password'. Below these are input fields for 'IDM Address' (with example 'e.g. idm.motorolasolutions.com'), 'UNS Address' (with example 'e.g. uns.motorolasolutions.com'), 'Domain' (with example 'e.g. abc'), and 'Presentity' (with example 'e.g. pres:suid.00001.001.000001@abc'). A note next to the Presentity field states: '(*Device ID must be in hexadecimal with leading zeros e.g. pres:suid.005dc.0d7.00251c@abc)'. At the bottom right are three buttons: 'Clear', 'OK', and 'Cancel'.

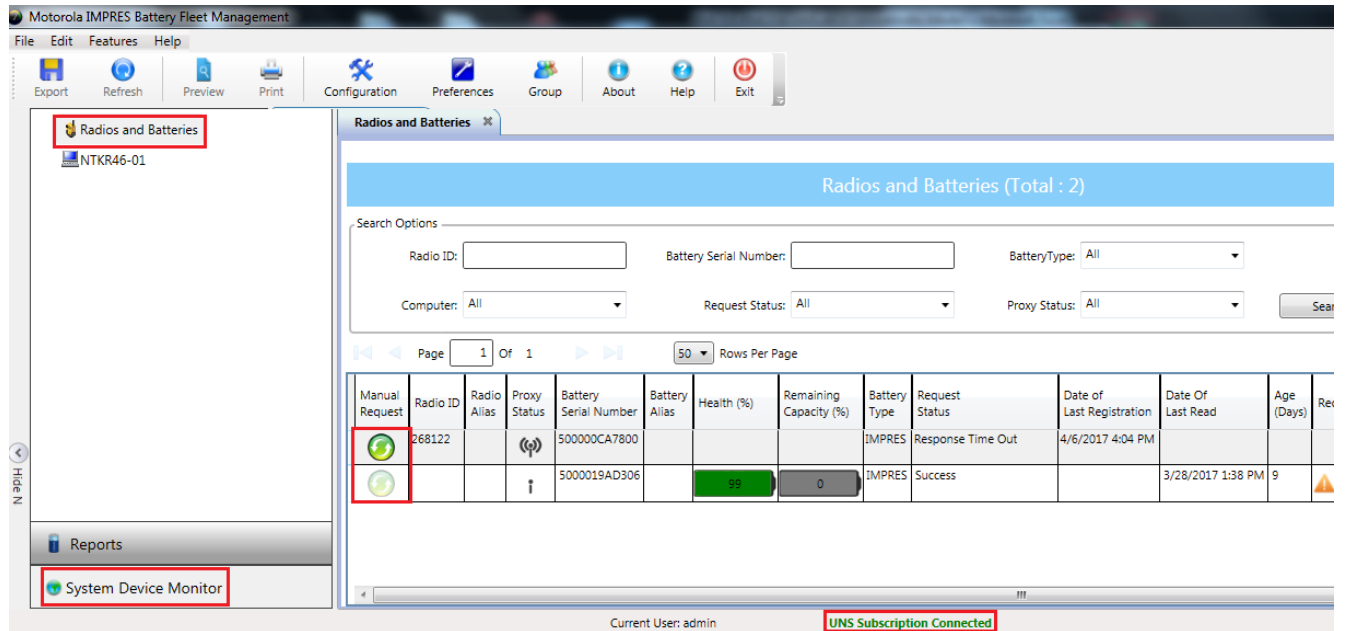
Note1: User able to subscribe for individual or group devices by inserting different presentity type in the **Presentity** field, e.g.

- pres:suid:00001.001.000001@abc
- group:applicationGroup1@abc
- static:staticGroup1@abc

2. If the IDM login is correct, the below dialog box will be shown. Select **Yes** to proceed. IMPRES Battery Fleet Management application will be restarted to begin ASTRO UNS Client service.

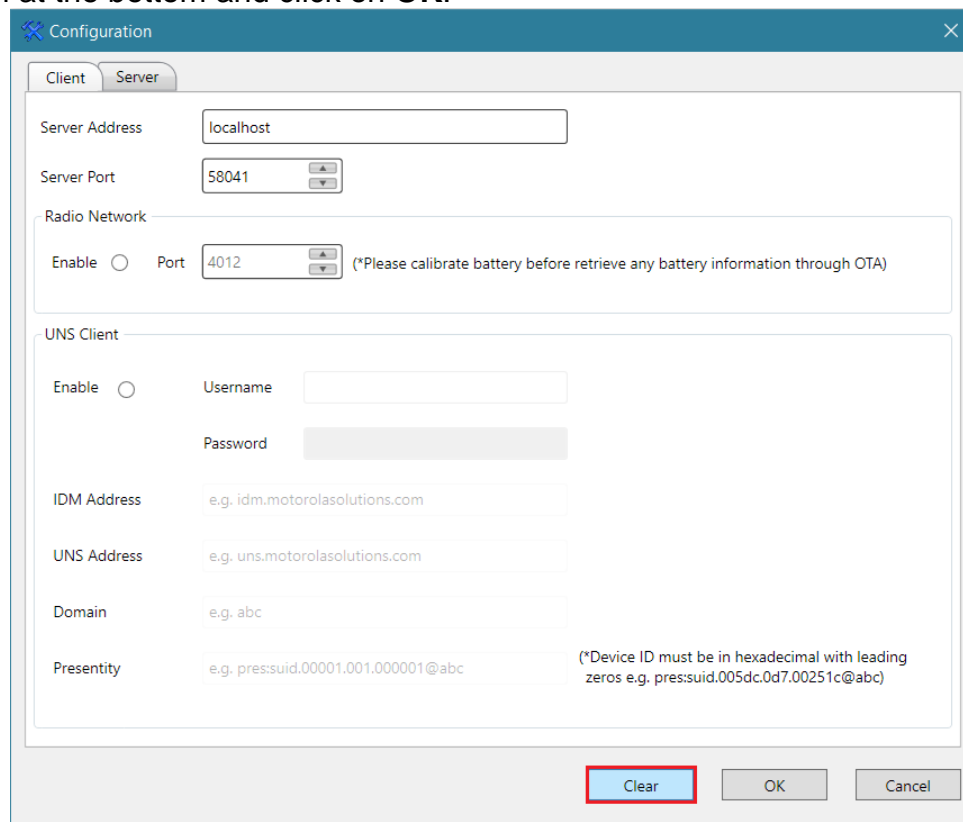


3. Once the IMPRES Battery Fleet Management has received any incoming battery data, go to **System Device Monitor** tab and click on the **Radios and Batteries** for the battery report. The UNS subscription connection status will be shown at the bottom.



4. To perform a manual request, click on the Green button to for immediate battery data request.

Note2: To disable both Mototrbo Radio Network and ASTRO UNS features, click on the **Clear** button at the bottom and click on **OK**.

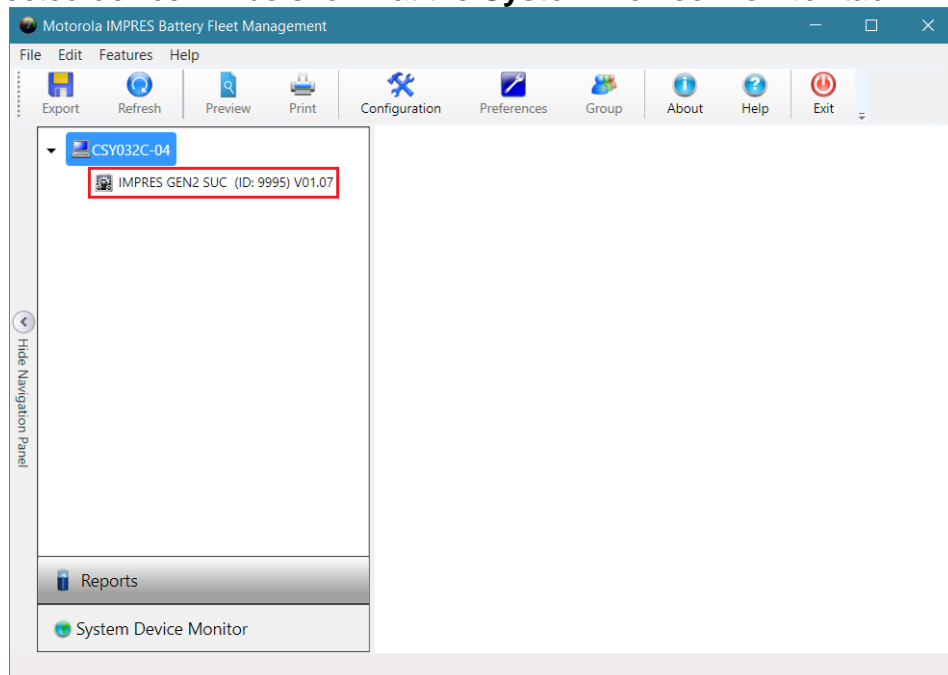


2.5 Device/Charger Firmware Update

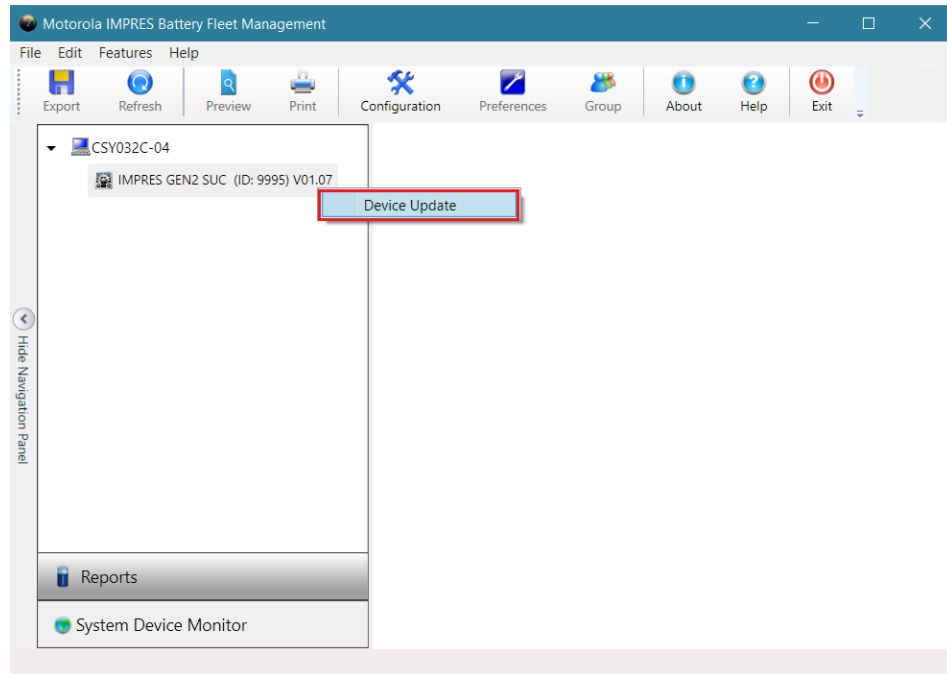
Note: The same update method applied to all IMPRES Gen 1 and Gen 2 devices/chargers including CIU (Charger Interface Unit), BDR (Battery Data Reader), SUC (Single-Unit Charger), DUC (Dual-Unit Charger) and MUC (Multi-Unit Charger).

To upgrade the IMPRES device/charger firmware to a newer version:

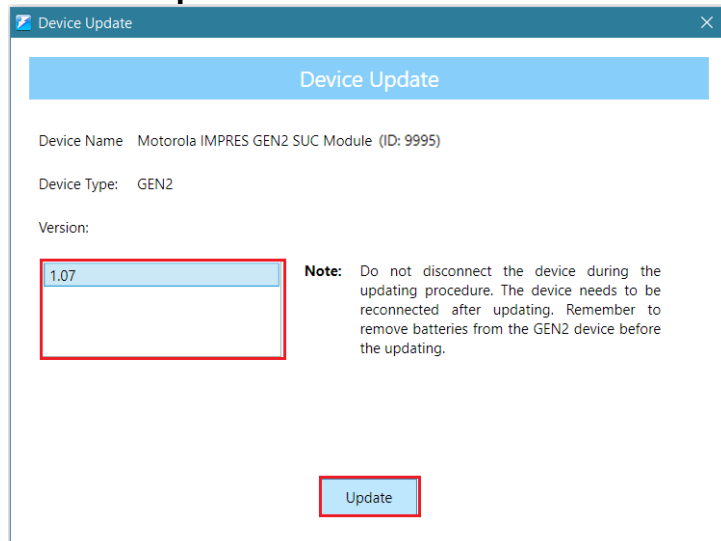
1. Remove all batteries that are inserted into device
2. Connect the device with USB cable to the USB port on your computer
3. The connected device will be shown at the **System Device Monitor** tab



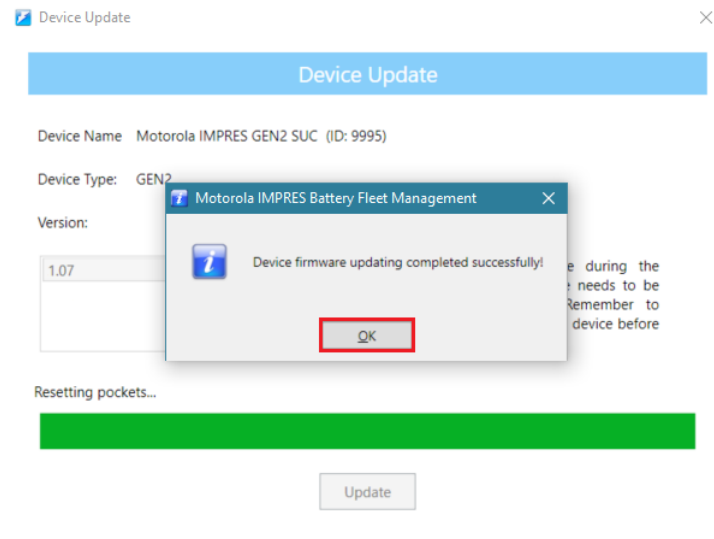
4. Select the device that you wish to upgrade in the Device Monitor tree view. Go to **Features->Device Update** from the IMPRES Battery Fleet Management main menu Or simply right click on the device and click on the **Device Update**.



5. The **Device Update** dialog will appear. Select the device firmware version from the Version list and click on the **Update**.



6. The below message box will appear after firmware has successfully updated. Click on **OK** to close the message box.

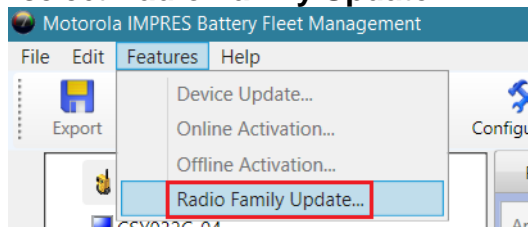


2.6 Radio Family Update

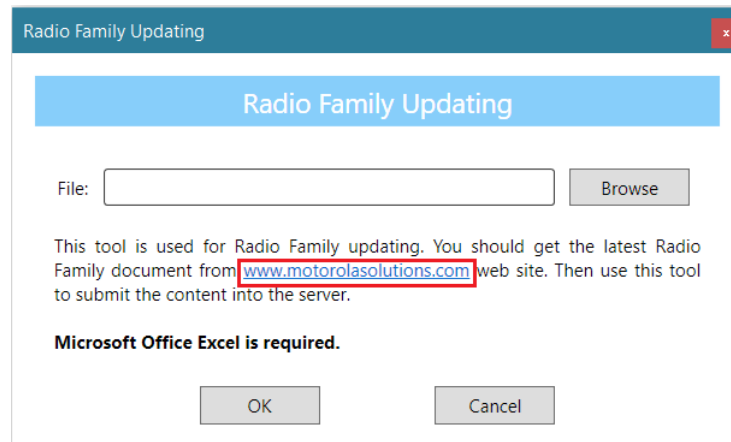
Whenever there is a new battery release later than the IMPRES Battery Fleet Management application release, it would be a chance for user to see the new battery with Radio Family name as 'Unknown'. User would need to update to the latest radio family in order to get the latest radio family name.

To perform Radio Family Update:

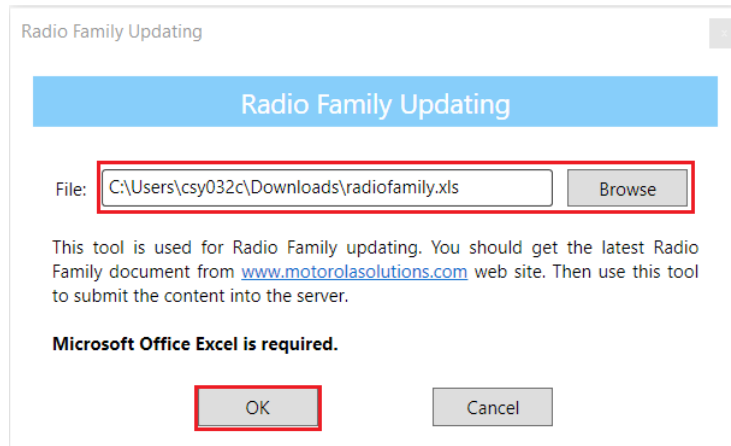
1. Go to **Features** and then select **Radio Family Update...**



2. Click on the **www.motorolasolutions.com** link to download the latest Radio Family file.



3. Click on the **Browse** button to manually locate the **radiofamily.xls** and then click on **OK**.



4. The below message box will appear after radio family file has successfully updated. Click on **OK** to close the message box.

